



WOMIC STEEL PRODUCT BROCHURE

WOMIC STEEL GROUP

HQ: Lugu Industrial Park, YueLu District, Changsha City, Hunan Province, China.

Phone/Wechat/Whatsapp: 0086-15575100681

Phone/Wechat/Whatsapp: 0086-18390957568

Email: sales@womicsteel.com

Web: www.womicsteel.com 24 Hours Online

One Stop Steel Products Supplier

CONTENTS

COMPANY PROFILE

01

PRODUCT INTRODUCTION

06

PRODUCTION EQUIPMENT

22

LABORATORY INSPECTION EQUIPMENT

23

PRODUCTION DATA CONTROL

24

MANUFACTURING PROCESSING

26

ANTI-CROSSION PROCESSING

27

PACKING & SHIPPING

28

PROJECT APPLICATION

29

COMPANY PROFILE

Womic Steel Group is the leading professional steel pipe manufacturer in China with over 20 years experience, which is also the top supplier in manufacturing and exporting of welded and seamless carbon steel pipes, stainless steel pipes, pipe fittings, galvanized steel pipes, steel hollow sections, boiler steel tubes, precision steel tubes, EPC company construction used steel materials, OEM steel pipe fittings and spools.

Backed by a complete set of testing facilities, our company strictly abides by the ISO 9001 quality management system and has been certified by numerous authoritative TPI organizations, such as SGS, BV, TUV, ABS, LR, GL, DNV, CCS, RINA, and RS.

The steel pipe products produced by Womic Steel have been widely used in various engineering projects, including oil and gas extraction, water transportation, urban pipeline network construction, offshore and onshore platform construction, mining industry, chemical industry, and power plant pipeline construction. The company's partners span Southeast Asia, the Middle East, Europe, Africa, South America, Oceania, and over 120 countries and regions.

In addition, Womic Steel provides a range of steel pipe products and services to the world's top 500 petroleum and gas companies, as well as EPC contractors, such as BHP, TOTAL, Equinor, Valero, BP, PEMEX, Petrofac, and so on.

Womic Steel adheres to the principle of "Customer first, Quality Best" and is confident in supplying customers with high-quality products at competitive prices. Womic Steel will always be your most professional and reliable business partner. Womic Steel are committed to providing one-stop service to our customers all over the world, making the steel products serve to everywhere of this world !

**CUSTOMER FIRST
QUALITY BEST**

ENTERPRISE ADVANTAGES

1. Professional production services:

After more than twenty years of dedicated service, the company has a deep understanding of the production and export of steel pipes. This wealth of knowledge enables them to expertly cater to the needs and requirements of clients across the globe, ensuring unparalleled client satisfaction.

2. Support product customization:

With its expertise in producing custom steel pipe fittings, Womic Steel Group has become the first choice for various industries looking for custom solutions to meet their specific requirements.

3. Widely used products:

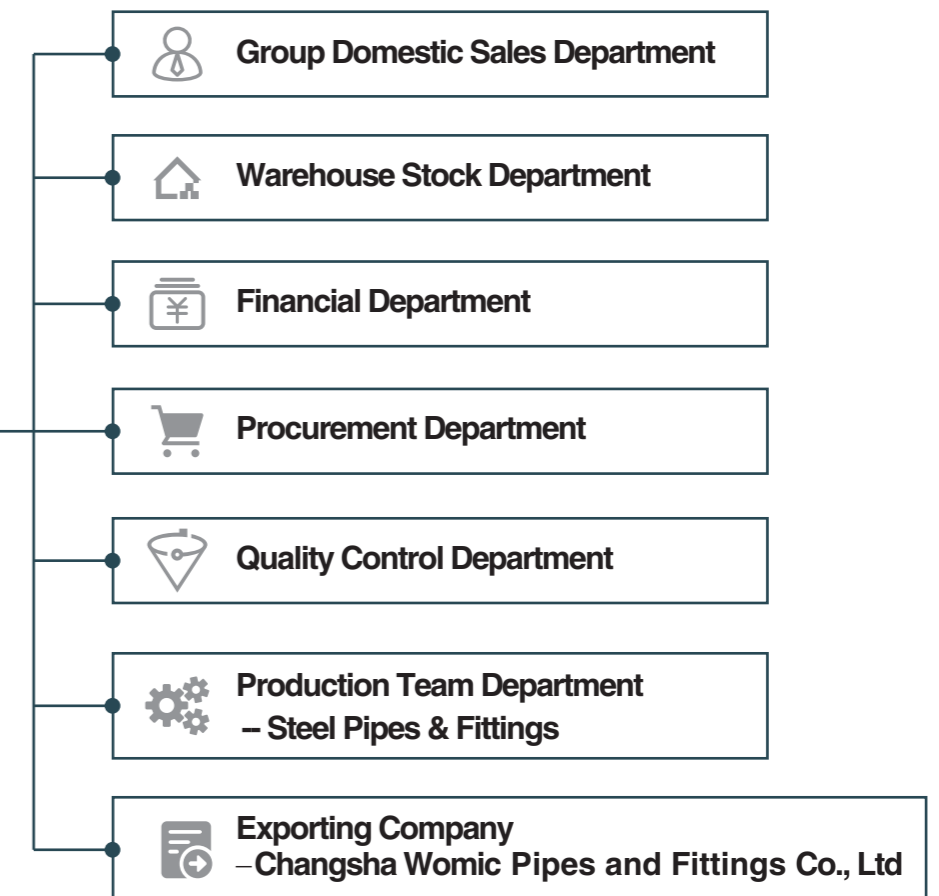
Welded pipes are made by joining the edges of steel sheets or coils while seamless pipes are produced without any welding. This versatility in production capabilities enables the company to cater to a wide range of applications, adapting to various industries such as construction, oil and gas, and automotive.

4. Professional Service Team :

In addition to technical competence, Womic Steel Group places great emphasis on customer service and satisfaction. The company has a professional and experienced customer support team to provide personalized assistance from the initial inquiry to final after-sales support.



ORGANIZATIONAL STRUCTURE OF THE GROUP



CERTIFICATES:



WHAT WE DO ?

Main Products Range

1. ERW Steel Pipe/ Tubes : OD 1/2 – 26 Inch (21.3-660mm)
 2. SSAW / LSAW Steel Pipe: OD 8 – 160 Inch (219.1-4064mm)
 3. Seamless Steel Pipe: OD 1/8 – 36 Inch (10.3-914.4mm)
 4. Boiler Steel Tubes / Pipes
 5. Stainless Steel Pipes & Fittings
 6. Carbon Steel Fittings / Flanges / Elbows / Tee / Reducer / Spools
- Coatings Service: Hot Dipped Galvanized, FBE, 2PE, 3PE, 2PP, 3PP, Epoxy...

Projects Serving

Oil & Gas & Water	Civil Construction
Mining	Chemical
Power Generation	Offshore & Onshore
Pilling and drilling	...

Services & Customizing

- Cutting
- Painting
- Threading
- Slotting
- Grooving
- Spigot & Socket Push-Fit Joint

Why choose us ?

Womic Steel Group well experienced in steel pipe production and exporting, also well cooperated with some well-known EPC contractors, importers, traders and stockiest for many years. The good quality, competitive price and flexible payment term always makes our customers feel satisfied, and widely recognized & trusted by end users and always gets positive feedback and praises from our customers.

The steel tubes/pipes & fittings we produced are widely used for petroleum, gas, fuel & water pipeline, offshore /onshore, sea port construction projects & building, dredging, structural Steel, piling and bridge construction projects, also precision steel tubes for conveyor roller production, ect...

We welcome new and old customers from all walks of life to contact us for future business relationships and achieving mutual success!

ERW 直缝电阻焊管 ERW STEEL PIPE



生产工艺 / Production Method :

Electric Resistance Welded (ERW) Steel Pipes, which made from strips of hot-rolled steel which are passed through forming rolls and welded into various wall thicknesses and grade levels by High Frequency Electric Resistance Welding.

ERW Steel Pipes are widely applied in liquid delivery, petroleum and natural gas industries, oil transportation, and pressured technical delivery conditions and Oil & Gas Transmission , Offshore Line Pipe, Sour Service and etc.

标准和钢级 / Standard and Steel Grade:

ASTM A53, ASTM A53, ASTM A178, ASTM A252, ASTM A500/501, ASTM A691, ASTM A672, EN 10217, EN10219, EN10210, EN10025, S235JRH,S275J0H,S275J2H,S355J0H,S355J2H,S355K2H,S460 etc.

API 5L PSL1:

GR B,X42,X46,X52,X56,X60,X65,X70,X80

API 5L PSL2:

BN,X42N,X46N,X52N,X56N,X60N,X65Q,X70Q,X80Q

API 5L PSL2 (Annex H) Sour Service:

BNS,BQS,X42NS,X42QS,X46NS,X46QS,X52NS,X52QS,X56QS,X60QS,X65QS,X70QS

API 5L PSL2 (Annex J) Offshore Service :

BNO,BQO,X42NO,X42QO,X46NO,X46QO,X52NO,X52QO,X56QO,X60QO,X65QO,X70QO,X80QO

GB/T971:

L245N,L290N,L320N,L360N,L390N,L415N,L450Q,L485Q,L555Q,

Production Specifications:

Outside Diameter:

21.3mm -660mm (1/2 Inch -26 Inch)

Wall Thickness: 0.8mm - 22.2mm

Length: up to 18m

Regular Precision Pipes Size:

101.6mm, 108mm, 127mm, 133.1mm, 152.4mm, 158.8mm, 165.1mm, 177.8mm, 219.1mm etc, customized sizes also available.

Tolerance control of the Precision ERW Steel Pipes :

OD 63mm ~ 101.6mm ~ 127mm,

On Specified OD Tolerance ± 0.1 mm, Ovality 0.2 mm;

OD 133.1mm ~152mm~ 219.1mm,

On Specified OD Tolerance ± 0.15 mm, Ovality 0.3 mm;

On wall Thickness : ± 0.1 mm for the pipe wall thickness below and include 4.5mm, ± 0.2 mm for the pipe wall thickness above 4.5mm.

Straightness : Shall not exceed 1 in 1000 (measured at the midpoint of the tube).

Surface : Fusion Bond Epoxy Coating, Coal Tar Epoxy, Polyamide Epoxy, 3PE, 3PP, Ho-dipped Galvanized, Zinc Coating , Bitumen Varnish Coating and etc.

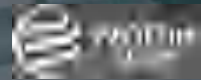
Standard & Grade of Precision Pipes:

SANS 657-3, DIN 2391, DIN2394,DIN 2445, DIN 2448, DIN 17175, EN 10305, DIN 1626, DIN 1629/4, ANSI A210, ASTM A179, ASTM A450,A519, BS1139, BS 6323, GOST 8734,9567, GB/T 8162, GB/T 8163, JIS G3459, JIS G3456

Application:

Precision steel tubes are utilized in a wide range of applications,including Conveyor roller manufacturing, hydraulic components, Hydraulic systems, Automotive and Aerospace industries, Engineering and Machinery, construction and infrastructure, Mining,and the energy sector.The OD and ovality tolerances can be controlled within ± 0.1 mm,ensuring reliable performance and precise in various demanding environments.





02

PRODUCT INTRODUCTION

SSAW 螺旋钢管 SSAW STEEL PIPES



生产工艺 / Production Method :

Spiral welded steel pipes, also known as helical submerged arc-welded (HSAW) pipes, are a type of steel pipe characterized by their distinctive manufacturing process and structural properties. Produced through a unique process involving the use of a coil of steel strip. The strip is unwound and formed into a spiral shape, then welded using the submerged arc welding (SAW) technique. This process results in a continuous, helical seam along the length of the pipe.

Production Specifications:

- Out Diameter :** 168.3mm - 3200mm
- Wall Thickness :** 5mm - 30mm
- Length :** Single Random, Double Random & Customized Length up to 80 Meters.



标准和钢级 / Standard and Steel Grade:

Line Pipe Standards:

- API 5L :** GR B,X42,X46,X52,X56,X60,X65,X70 X80
- ASTM A53:** GR A,GR B,GR C,GR D

Water Pipe Standards:

- ASTM A36/A36M ASTM A283/A283M GR.C,D
- ASTM A572/A572M GR.42,50,55,60,65
- ASTM A570/A570M GR 30,33,36,40,45,50
- ASTM A607/607M GR 45, 50
- ASTM A907/907M GR 30,33,36,40
- ASTM A935/A935M GR 40,45,50 etc.
- AWWA C200:** Steel water pipe
- AWWA C203:** Coal-Tar Protective Coating and Lining for Steel Water Pipelines
- AWWA C205:** Cement Mortar Protective Lining and Coating for Steel Water Pipe
- AWWA C208:** Standard for Dimensions for Fabricated Steel Water Pipe Fittings
- AWWA C210:** Liquid-Epoxy Coating Systems for Interior & Exterior of Steel Water Pipelines
- AWWA C213:** Fusion-Bonded Epoxy Coating for interior & Exterior of Steel Water Pipelines

Piling Pipe Standards:

- ASTM A588/A588M**
- ASTM A252:** GR.1,GR.2,GR.3
- ASTM A572:** GR 42,GR 50,GR 55,GR 60,GR 65
- API 5L:** GR B,X42,X46,X52,X56,X60,X65,X70,X80
- EN10219:** S235JR, S275JR, S355JR, S355JOH, S355J2H,S420NH,S460 etc.

Product Application:

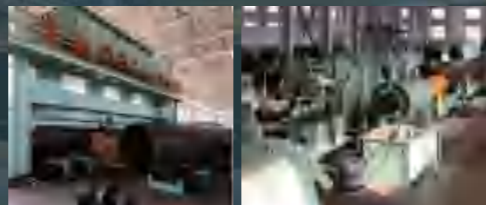
Spiral steel pipes are used in diverse industries such as oil and gas, water supply, construction, agriculture, Piling and infrastructure development. They are suitable for both above-ground and underground applications.

Testing:

Chemical Composition Analysis, Mechanical Properties (Ultimate Tensile strength, Yield Strength, Elongation).Flattening Test, Bending Test, Impact Test, Hydrostatic Test, X-ray Test, UT test, Visual Inspection, Dimension Checking and etc.



直缝焊管 LSAW STEEL PIPES



生产工艺 / Production Method :

LSAW (Longitudinal Submerged Arc Welding) steel pipes are a type of JCOE welded steel pipe characterized by their unique manufacturing process and wide range of applications. These pipes are manufactured by forming a steel plate into a cylindrical shape and longitudinally welding it using submerged arc welding techniques.

Application:

LSAW (Longitudinal Submerged Arc Welding) steel pipes find diverse applications across various industries due to their structural integrity and versatility. Below are some of the key usages and applications of LSAW steel pipes: Oil and Gas Transportation, Water Infrastructure, Chemical Processing, Construction and Infrastructure, Piling, Energy Sector, Mining, Industrial Processes, Infrastructure Development, Structural Support, Shipbuilding, Automotive Industry

标准和钢级 / Standard and Steel Grade:

Standards:

API 5L PSL1/PSL2, API 2B, ASTM A53, EN10217, En10219, ASTM A500, ASTM 252, ASTM A672, DIN 2458, GB/T 3091, GB/T 9711, IS 3589 etc.

Steel Grade:

API 5L: GR B, X42, X46, X52, X56, X60, X65, X70, X80

EN: S235, S275, S355, S420, S460 etc.

ASTM A53: GR A, GR B, GR C

ASTM A252: GR 1, GR 2, GR 3

GB: Q195, Q215, Q235, Q345, L175, L210, L245, L320, L360-L555

Production Specifications:

Out Diameter: 355.6mm-1828.8mm (14 Inch -72 Inch)

Wall Thickness: 8-60mm

Length: 5.8m - 80m

Straight Seam Rolling Welded / T-type Welded Steel Pipes Specifications:

Out Diameter: 355.6mm-3800mm

Wall Thickness: 8-120mm

Length: Single Joint Length on or below 3.2m,

Butt-jointing length up to 100m.

Usage: Steel structure, Foundation, Piling Structure etc.





生产工艺 / Production Method:

Seamless steel pipe is the steel pipe or tubes without weld-seam or a weld-joint. Seamless carbon steel pipes are produced by steel ingots or solid tube blanks that are perforated into capillary tubes, and then made by hot rolling, cold rolling or cold drawing, with advantaged characteristics of excellent durability and corrosion resistance.

Carbon Seamless steel pipe is a tubular section or hollow section cylinder, usually used widely to convey or transfer liquids and gases (fluids), powders and others like small solids.

Womic supplying seamless steel pipe for Onshore/Offshore, Construction Projects, Including hot rolled seamless pipes and cold drawn (rolled) seamless pipes.



标准和钢级 / Standard and Steel Grade:

- API 5L:** GR.B, X42, X46, X52, X56, X60, X65, X70, X80
- API 5CT:** J55, K55, L80, N80, P110, C90, T95, Q125
- API 5D :** E75, X95, G105, S135
- EN10210 :**S235JRH, S275J0H, S275J2H, S355J0H, S355J2H, S355K2H
- ASTM A106:** GR.A, GR.B, GR.C
- ASTM A53/A53M:** GR.A, GR.B
- ASTM A335:** P1, P2, 95, P9, P11P22, P23, P91, P92, P122
- ASTM A333:** Gr.1, Gr.3, Gr.4, Gr.6, Gr.7, Gr.8, Gr.9,Gr.10, Gr.11
- DIN 2391:** St30Al, St30Si, St35, St45, St52
- DIN EN 10216-1 :** P195TR1, P195TR2, P235TR1, P235TR2, P265TR1, P265TR2
- JIS G3454 :**STPG 370, STPG 410
- JIS G3456 :**STPT 370, STPT 410, STPT 480
- GB/T 8163 :**10#,20#,Q345
- GB/T 8162 :**10#,20#,35#,45#,Q345

Standard & Grade of Alloy Pipes:

ASTM A333, ASTM A335, ASME SA335, ASTM A387, ASTM A691, ASTM A530/A530M, DIN17175, JIS3467, GB/T 5310 etc.

Production Specifications:

Pipe Size: OD 1/8 Inch - 36 Inch (10.3mm - 914.4mm)
Wall Thickness : 1.65mm - 60mm
Length: 5.8m, 6m, 12m,or customized length 0.5Mtr-20Mtrs.

Casing & Tubing :

Outside Diameter:

Casing: 114.3 - 762 mm Tubing: 26.7 - 114.3 mm;

Wall Thickness:

Casing: 5.21 - 20.0 mm Tubing: 2.87 - 16.0 mm;

Casing & Tubing Length:

Tubing: R1(6.1 -7.32 mm), R2(8.53 - 9.75 mm);

Casing: R1(4.88 - 7.62 mm), R2(7.62 - 10.36 mm), and R3(10.36 - 14.63 mm)

Standard & Grade: API 5CT, J55, K55, L80, N80, P110, C90, T95, Q125

Casing Tubing Ends: BTC, SC, LC, BC, NU, EU, EUE, STC, VAM-TOP, PREMIUM, PH6

Drill Pipe :

OD: 60.32mm-168.28mm

WT: 6.45mm - 12.7mm

Length: R1, R2, R3

Drill Collars Size: OD: 3 1/8"-11"

Length: 30Ft / 31Ft / 43Ft / R1~R3

Standard & Grade: API 5DP/API Spec 7-1 E75, X95, G105, S135

04

PRODUCT INTRODUCTION

无缝钢管 SMLS STEEL PIPES



Photo3 NDE/UT for pipe-body

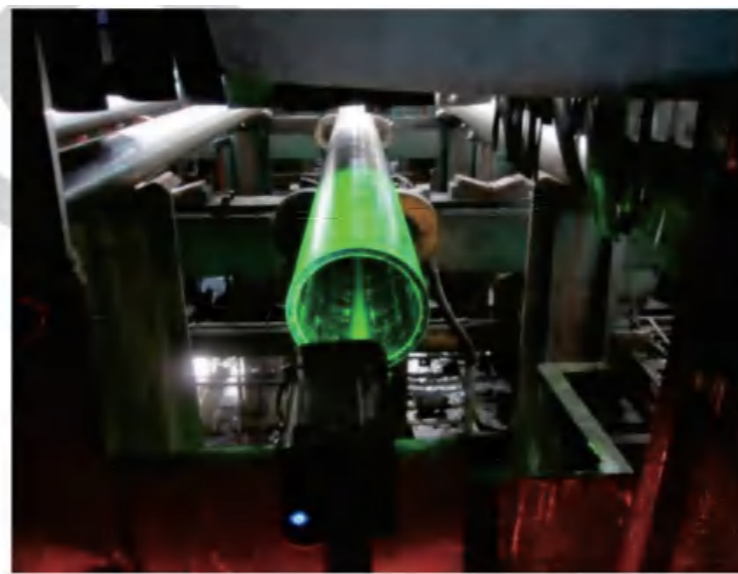


Photo4 MPI for pipe-end



Fig.17 Dimension inspection



Fig.13 Threading check



Photo1 Stencil on coupling



Photo2 Visual quality inspection



Photo9 Hydrostatic test



Photo10 Hydro-testing curve

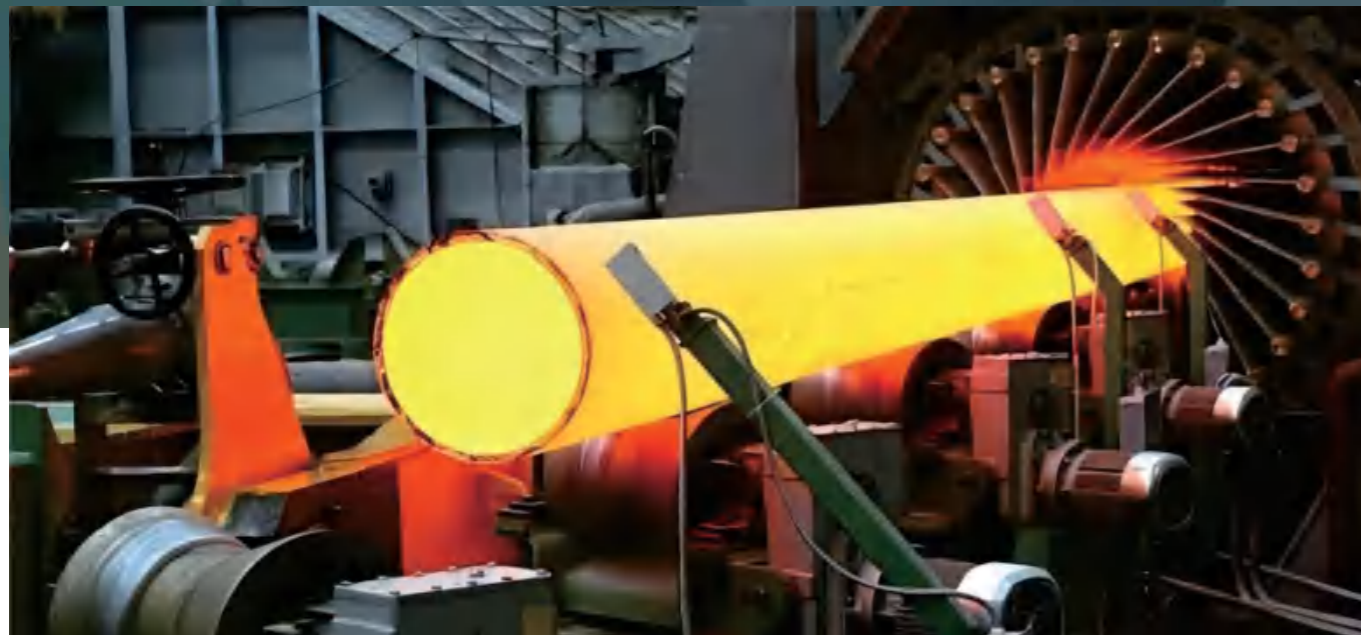


Photo5 Impact test



Photo6 Impact test value at 0 degree

不锈钢管 STAINLESS STEEL PIPES



生产工艺 / Production Method:

Stainless seamless steel pipes are a vital component in modern industrial applications, renowned for their exceptional durability, corrosion resistance, and seamless construction. Comprising a unique alloy of iron, chromium, and other elements like nickel and molybdenum, these pipes exhibit unparalleled strength and longevity.

The seamless manufacturing process involves extruding solid billets of steel to form hollow tubes without any welded joints. This construction method eliminates potential weak points and enhances structural integrity, making stainless seamless steel pipes highly reliable for various applications.



标准和钢级 / Standard and Steel Grade:

Standards: ASTM A213, ASTM A269, ASTM A312, ASTM A358, ASTM 813/DIN/GB/JIS/AISI etc...

Steel Grades: 304, 304L, 310/S, 310H, 316, 316L, TP310S, 321, 321H, 904L, S31803 etc...

Seamless Stainless Steel Pipes Production Specifications:

OD: 1/8 Inch – 32 Inch, DN6mm – DN800mm.

Wall Thickness: Sch10, 10s, 40, 40s, 80, 80s, 120, 160 or Customized.

Length: Single Random, Double Random & Cut Length.

End: Plain End, Beveled End.

Surface: Annealed and Pickled, Bright Annealed, Polished, Mill Finish, 2B Finish, No. 4 Finish, No. 8 Mirror Finish, Brushed Finish, Satiny Finish, Matte Finish.

Welded Stainless Steel Pipes Production Specifications:

Size: OD: 1/8 Inch – 80 Inch, DN6mm – DN2000mm.

Wall Thickness: Sch10, 10s, 40, 40s, 80, 80s, 120, 160 or Customized.

Length: Single Random, Double Random & Cut Length.

End: Plain End, Beveled End.

Surface: Annealed and Pickled, Bright Annealed, Polished, Mill Finish, 2B Finish, No. 4 Finish, No. 8 Mirror Finish, Brushed Finish, Satiny Finish, Matte Finish.

Standards: ASTM A249, A269, A270, A312, A358, A409, A554, A789,/DIN/GB/JIS/AISI etc...

Steel Grades: 304, 304L, 310/S, 310H, 316, 316L, TP310S, 321, 321H, 904L, S31803 etc...

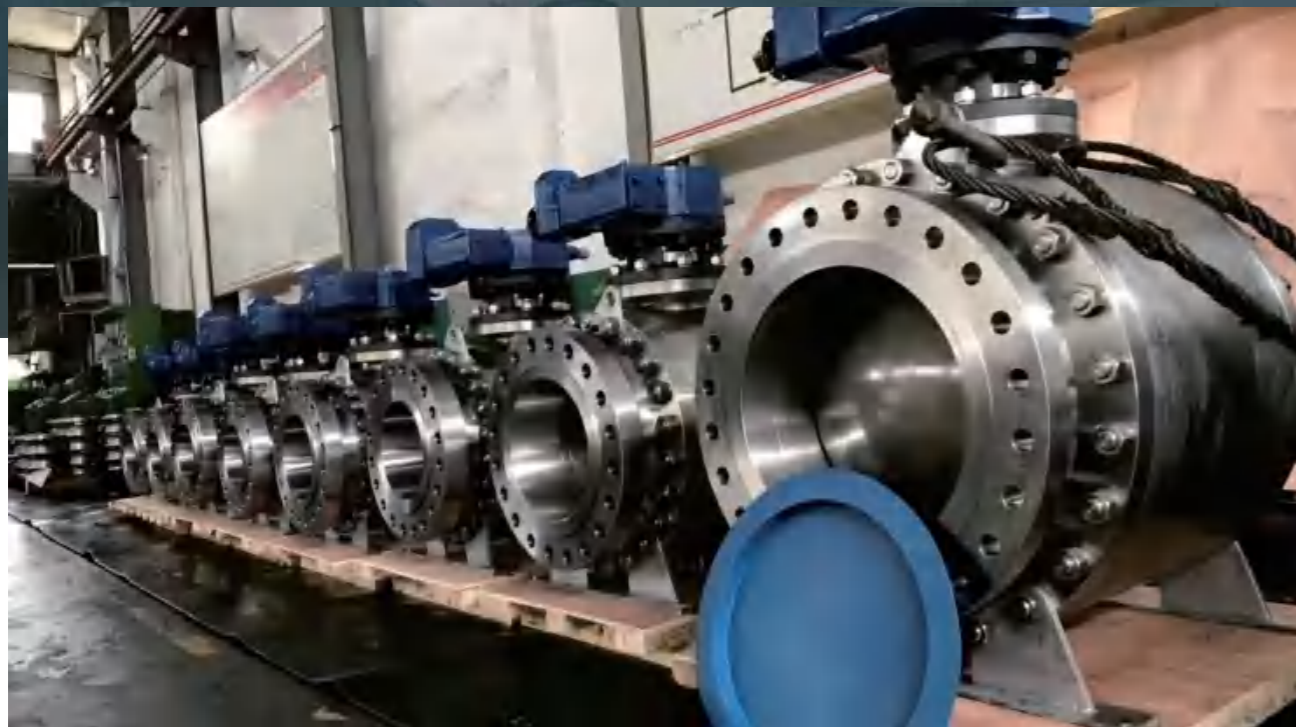


Manufacturing Process:

Electric Fusion Welding (EFW): In this process, a longitudinal seam is welded by applying electrical energy to the welding arc.

Submerged Arc Welding (SAW): Here, the weld is made by melting the edges with a continuous arc submerged in flux.

High-Frequency Induction (HFI) Welding: This method employs high-frequency currents to create a weld seam in a continuous process.



Fittings Size:

OD: 1/4 Inch – 56 Inch, DN8mm – DN1400mm,

Wall Thickness: Max to 80mm

Types of Fittings:

Steel Elbow, Steel Bends, Steel Tee, Con. Reducer, Ecc. Reducer, Weldolet, Sockolet, Thredolet, Steel Coupling, Steel Cap, Stub End, Steel Spools, Nipples etc...



Standard Information :

ASME B16.9 - Factory-Made Wrought Steel Butt welding Fittings

ASME B16.11 - Forged Fittings, Socket-Welding and Threaded

ASME B16.5 - Pipe Flanges and Flanged Fittings

ASME B16.28 - Wrought Steel Butt welding Short Radius Elbows and Returns

MSS-SP-75 - Specification for High-Test, Wrought, Butt-Welding Fittings

MSS-SP-43 - Wrought Stainless Steel Butt-Welding Fittings



Steel Grade :

- **Carbon Steel:** ASTM A234 WPB, ASTM A105
- **Alloy Steel:** ASTM A234 Wp1, WP5, WP9, WP11, WP22, WP91, ASTM A182 F1, F5, F9, F11, F22, F91
- **Stainless Steel:** ASTM A403 WP304, WP304L, WP316, WP316L, ASTM A182 F304, F304L, F316, F316L
- **Duplex and Super Duplex Stainless Steel:** ASTM A815 UNS S31803, S32205, ASTM A182 F51, F53, F55

Application:

Pipe fittings are used to connect, control, or redirect the flow of liquids or gases within a piping system. They ensure proper fluid transport in industries such as plumbing, construction, and manufacturing.



Flange Size:

1/2 Inch – 60 Inch, DN15mm – DN1500mm, Pressure Rating: Class 150 to Class 2500.

Types of Flanges:

Weld Neck Flanges (WN), Slip-On Flanges (SO), Socket Weld Flanges (SW), Threaded Flanges (TH), Blind Flanges (BL), Lap Joint Flanges (LJ), Threaded and Socket Weld Flanges (SW/TH), Orifice Flanges (ORF), Reducer Flanges (RF), Expander Flanges (EXP), Swivel Ring Flanges (SRF), Anchor Flanges (AF)

Pressure Rating: Class 150 to Class 2500.

Standard Information :

EN 1092-1: European standard for flanges. Specifies the flange types, dimensions, and pressure ratings.

DIN 2501: German Industrial Standard specifying dimensions and pressure ratings for plate flanges

ASME B16.5 - American standard for pipe flanges and flanged fittings. Covers flanges in sizes NPS 1/2" to 24".

ASME B16.47 - ANSI standard for large diameter steel flanges, covering sizes NPS 26" to 60"

Steel Grade :

Carbon Steel: ASTM A105, ASTM A350 LF1/2, ASTM A181

Alloy Steel: ASTM A182 F1, F2, F5, F7, F9, F11, F12, F22, F91

Stainless Steel: ASTM A182 F6, F304, F304L, F316, F316L, F321, F347, F348, F904L etc.

Application:

Flanges are commonly used in piping systems, allowing for easy disassembly and maintenance of the system. They are also used in industrial equipment such as pumps, valves, and static equipment to connect them with piping systems.



Valves Short Description:

Valve Size: 1/2 Inch – 120 Inch

Types of Valves: Gate Valve, Globe Valve, Ball Valve, Check Valve, Butterfly Valve, Plug Valve, Diaphragm Valve, Needle Valve, Pressure Relief Valve, Solenoid Valve, Safety Valve etc.

Valves Standard Information :

API 600: Covers the design and construction of cast and forged steel gate, globe, check, and rising stem ball valves

API 602: It specifies the requirements for small forged steel gate, globe, and check valves used in oil and natural gas industry applications

API 609: Standard for butterfly valves, covering design, materials, face-to-face dimensions, pressure-temperature ratings, and testing.

API 594: Specifies design, materials, face-to-face dimensions, pressure-temperature ratings, and examination, inspection, and testing requirements for check valves of lug-and-wafer type.

EN 593: European standard for butterfly valves. It covers design, materials, face-to-face dimensions, pressure-temperature ratings, and testing.

API 598: API 598 sets the inspection and testing requirements for various types of valves, including gate, globe, check, ball, and plug valves.

API 603: covers the requirements for corrosion-resistant, bolted bonnet gate valves with flanged or butt-weld ends. **DIN 3352:** DIN 3352 covers the requirements for resilient-seated gate valves in cast iron and cast steel for water supply and drainage applications.

Steel Grade :

Carbon Steel: ASTM A216 WCB, ASTM A105

Alloy Steel: ASTM A217 WC6, WC9, C5, C12
ASTM A182 F1, F5, F9, F11, F22, F91

Stainless Steel: ASTM A351 CF8, CF8M, CF3, CF3M, ASTM A182 F304, F316, F321, F347

Duplex and Super Duplex Stainless Steel: ASTM A995 Grade 4A, 5A, 6A, ASTM A182 F51, F53

Nickel Alloys: Monel: UNS N04400, Inconel: UNS N06600, N06625, UNS N10276, N06022

Titanium Alloys: Grade 2 (UNS R50400), Grade 5 (UNS R56400)

Application:

Valves are essential components in fluid handling systems, serving diverse purposes to control, regulate, and direct the flow of fluids. They are essential components in sectors such as oil and gas, petrochemicals, water treatment, and manufacturing.



PRODUCTION EQUIPMENT

LABOTARY INSPECTION EQUIPMENT



1. Unrolling Machine



2. Forming Machine



3. Welding Machine



4. Sizing Machine



5. Hydrostatic Test Machine



6. Online UT Machine



7. Edge Milling Machine



8. Flying Saw



9. Intermediate Frequency Processing



Metallographic Microscope



Tensile Testing Machine



Direct Reading Spectrometer



Infrared Carbon & Sulfur Analyzer



Impact Test Equipment Notch Broaching Machine



Impact Test Supporting Equipment Notch Projector



Hardness Testing Machine



OOH Analyzer



Impact Testing Machine

PRODUCTION DATA CONTROL



01 Raw Material Inspection

Raw Material dimension and tolerance check, appearance quality check, mechanical properties test, weight check and raw materials quality assurance certificate check. All materials shall be 100% qualified after arrived at our production line, to make sure the raw materials are okay to put into production.



02 Semi-Finished Inspection

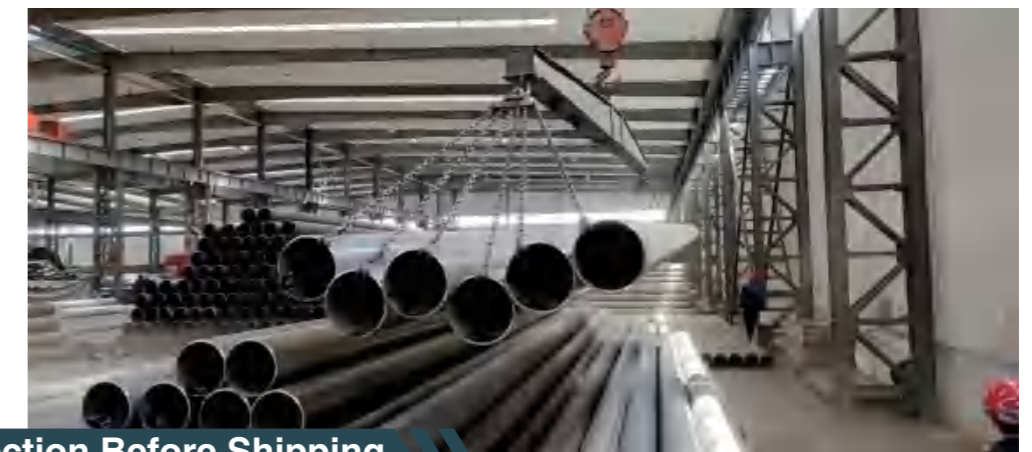
There would be some Ultrasonic Test, Magnetic Test, Radiographic Test, Penetrant Test, Eddy Current Test, Hydrostatic Test, Impact Test will be carried out based on the materials standard required, during the pipes and fittings production process. So once all test finished, Middle inspection will be arranged to make sure all required tests are 100% finished and get approved, and then continue to finishing pipes and fittings production.



03 Finished Goods Inspection

Our professional Quality Control department will do both Visual inspection and Physical test to make sure all pipes and fittings are 100% qualified. The Visual test mainly contents the inspection for Out Diameter, Wall thickness, Length, Ovality, Verticality. And Visual Inspection, Tension Test, Dimension Check, Bend Test, Flattening Test, Impact Test, DWT Test, NDT Test, Hydrostatic Test, Hardness Test would be arranged according to the different production Standards.

And the Physical test will cut a sample for every heat number to the Laboratory for double chemical composition and Mechanical test confirmation.



04 Inspection Before Shipping

Before shipping, the professional QC staff will do the final inspections, like whole order quantity and requirements double checking, the contents of pipes marking checking, packages checking, unblemished appearance and quantity counting, 100% guarantee everything fully and strictly meet customers requirements. Thus, during the whole process, we have confidence with our quality, and accept any third party inspection, like: TUV, SGS, Intertek, ABS, LR, BB, KR, LR and RINA.

Third Party Inspection



PRODUCT PROCESSING

01 MACHINE WORK



1.Threaded End



2.Grooved End



3.Tapered End



4.Spot Holing Machining



5.Beveled End



6.Flanges Welding



7.Cross Bar Welding



8.Clutch Lock Welding



9. Boiler Bending

ANTI-CORROSION PROCESSING

02 ANTI-CORROSION PROCESSING



1, 3PE / 3LPE Coating



2, FBE Coating



3, Epoxy Coating



4, Hot Dipped Galvanized



5, Anti-rust Black Coating



6, Thermal Insulation Coating

PACKING SHIPPING

PACKING & SHIPPING

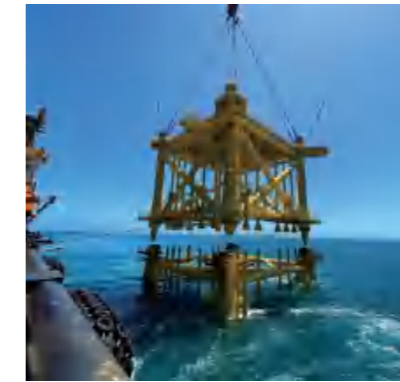


PROJECT APPLICATION

PROJECT APPLICATION



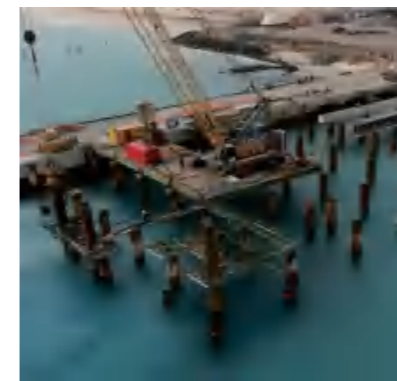
Oil&Gas



Offshore Platform



Construction Structural



Piling Construction



Mechanical Processing



Mining



Fire Safety



Boiler tubes



Water Transmission